

CONNECT

ENERGYUNITED'S MONTHLY MEMBER NEWSLETTER



IN THIS ISSUE

HONORING ENERGYUNITED
LINEWORKERS

SPRING IN
FULL SWING

BRIGHT
IDEAS



A LETTER FROM OUR CEO THOMAS GOLDEN

There are several things that set us apart as your local connection. Like our commitment to providing reliable energy at the lowest possible cost, our dedication to the community, and of course, the friendly voices and smiling faces who are eager to assist you with your energy needs at every step of the way. All of this, however, is made possible by one crucial group of people: our lineworkers.

These are the individuals who are working around the clock to keep your lights on and your life empowered. The crew, which is over 70 people, operates on trust and integrity. Within the team there's an understanding of camaraderie, that every single person will complete their role well, and that everyone is working with safety ever at heart. In many senses, it's a community of men and women that feels like family, and to some, they actually are family.

After all, power outages aren't a 9-to-5 thing, and members of our line crew are on call 24/7 to make sure that if you're ever left in the dark you don't stay that way for long. It's a trying job that exposes these individuals to the elements, high voltage and dangerous environmental situations. Many times, that means tending to the lines in inclement weather, on precarious and slippery grounds or in the pitch-black dark.

That's why in honor of North Carolina's Lineman Appreciation Day on April 10, we pause to express our gratitude to those who keep us connected to one another, our comforts and our resources. It's with tremendous joy and appreciation that we dedicate this month's issue to the linemen who make our everyday lives enriched.

My hope is that you too will recognize their hard work with a simple thank you. Whether you're moved to do so on Facebook, Instagram, Twitter or even just saying hey if you see them around, I know our linemen will appreciate the gesture. And to our linemen: thank you for everything you do.

Sincerely,
Thomas Golden, CEO

Thomas Golden



2022 ENERGYUNITED SUSTAINABILITY REPORT



The word “sustainability” means a lot of different things to different people. To some, it comes with a pressure to stay eco-friendly and make conscious energy choices; for others, it’s an emphasis on staying-power and sticking with something that is maintainable for the long haul. The fact is, both are correct and both (along with so much more) are covered in our 2022 Sustainability Report.

The report is a fully digital experience (to cut down on unnecessary paper waste) that dives into green efforts we’ve made, financially sustainable decisions we’ve taken and conscious cultural initiatives we’ve put into place to leave our communities even better than we found them. It can feel daunting to undertake an entire eco-movement or make long-term choices that serve our financial future soundly. But they are decisions we make confidently as a member-owned and governed cooperative to ensure that our children’s (and grandchildren’s) future remains bright and full of possibilities.

To learn more about what sustainability means to us,
simply scan the QR code below!



Did you enjoy the Sustainability Report? Let us know!
Email communications@energyunited.com to share your feedback!

EVERY DAY EMPOWERED

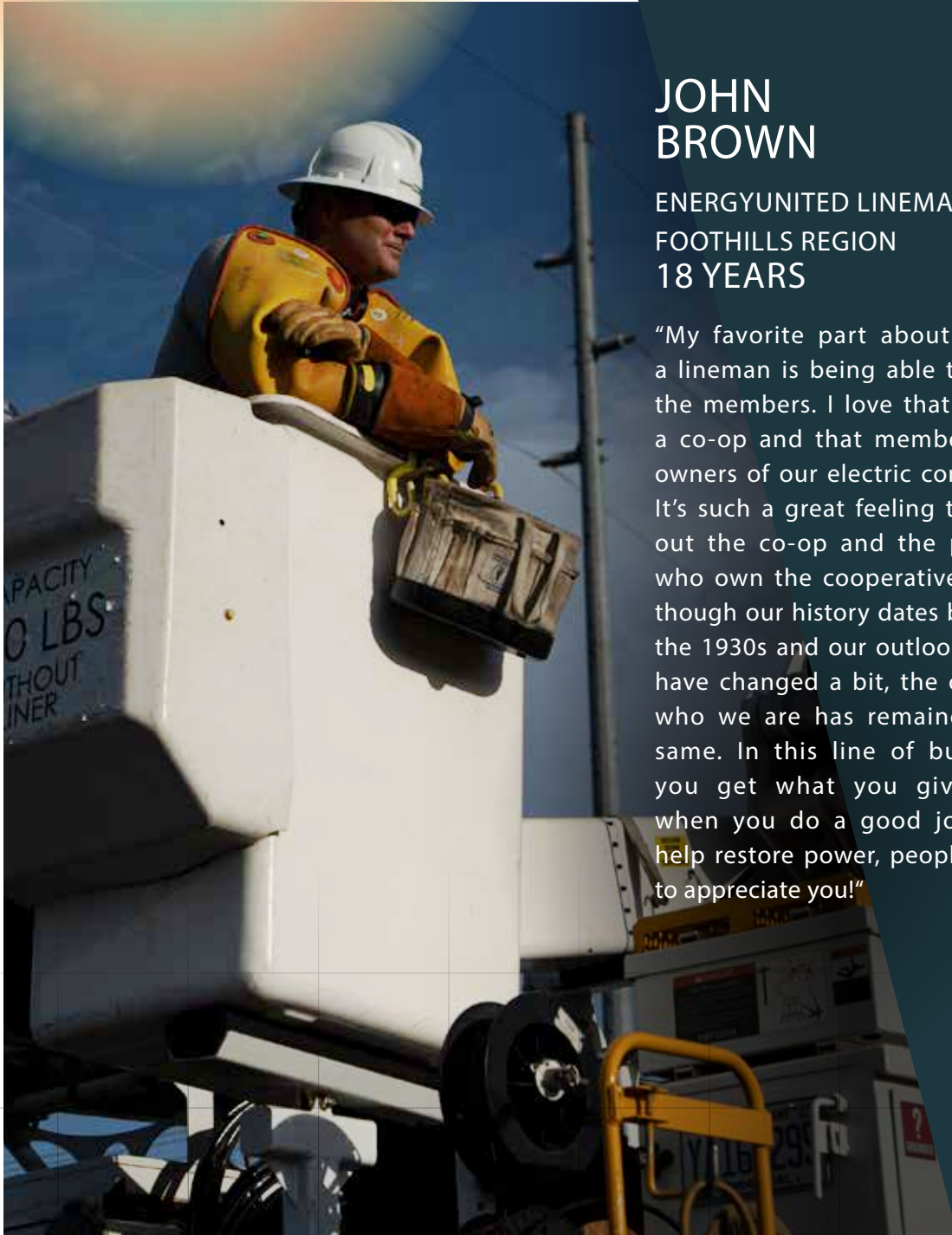
ENERGYUNITED LINEWORKERS

In honor of Lineman Appreciation Day on April 10, we are highlighting three of our 70+ EnergyUnited lineworkers.

JOHN BROWN

ENERGYUNITED LINEMAN
FOOTHILLS REGION
18 YEARS

"My favorite part about being a lineman is being able to help the members. I love that this is a co-op and that members are owners of our electric company. It's such a great feeling to help out the co-op and the people who own the cooperative. Even though our history dates back to the 1930s and our outlooks may have changed a bit, the core of who we are has remained the same. In this line of business you get what you give and when you do a good job and help restore power, people tend to appreciate you!"



ANDREW LANKFORD

ENERGYUNITED LINEMAN
YADKIN RIVER REGION
5 YEARS

"I love the thrill of being a part of the action. Doing something productive and making a real and noticeable difference in restoring power feels really good."

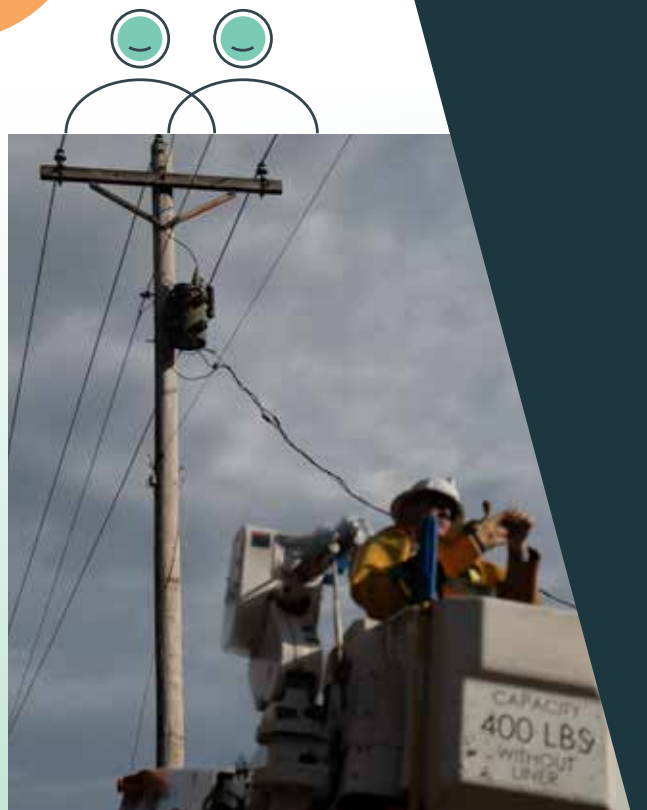


JOSHUA LEGG



ENERGYUNITED LINEMAN
LAKE NORMAN REGION
1 YEAR

"My favorite part of being a lineman is the group of great guys I get to work alongside. There's a real sense of community and camaraderie across the entire crew."



KEEPING YOU INFORMED WITH MY ENERGYHUB

Though we try our best to prevent outages, even we can't control the weather. So when your power goes out, our lineworkers go out too!

Make sure you stay informed during an outage by signing up for outage text alerts using My EnergyHub. It's simple and easy! Just download the app from the Apple or Google Play stores and allow for notifications! You'll be informed every step of the way!

 DOWNLOAD ON
THE APP STORE

 GET IT ON
GOOGLE PLAY



GOOD CATCH!

SAFETY TRAINING IN ACTION!

While out resolving an issue, an EnergyUnited lineman observed a young woman and two young children getting into a car. The woman, presumably forgetting something, ran back inside while the car began to roll. This fast-acting lineman quickly ran to the car and put it in park ensuring both kids were safe.

Safety is in everything we do, so thanks to continual learning our crew is trained to see danger and act accordingly!



SPRING IN FULL SWING

TIPS TO ENSURE YOU PLANT RESPONSIBLY!

The sapling trees we plant today may seem harmless, but as they grow, so do their branches, which can cause damage to the power lines and disrupt your access to reliable electricity.

When trees come into contact with power lines, they can cause a "fault," which causes line breakers to trip, fuses to blow, lights to blink on and off, and power outages to occur. By selecting your tree species and planting mindfully, you will prevent pruning and power disruptions in years to come!

SMALL TREES:

Trees that have a mature height of less than 20 feet (like redbuds, dogwoods and crabapple trees) are the easiest to manage close to a power line.

TALL TREES:

Trees that reach a mature height of 60+ feet should remain at least 50 feet away from power lines and at least 35 feet away from your house to ensure proper root development and minimize any damage to your house. Remember, evergreens should be separated by 6 to 10 feet, while deciduous trees should be 4 to 8 feet apart.

Our crews routinely inspect trees along the right-of-way corridors for potential hazards such as dead or leaning trees, or limbs that have grown into the power lines. Those trees are trimmed and/or removed if they pose a threat to the power lines of the community. These actions enabled us to achieve a reliability rating of 99.9% in 2022, one of the highest in the nation. Proactive measures like this are just another way we work to keep you empowered!



HAPPY ARBOR DAY! PLANT A TREE ON US!

Visit one of our offices and receive a complimentary sapling to plant when you sign up for paperless billing!

Friday, April 21 – Cornelius
Wednesday, April 26 – Lexington
Friday, April 28 – Statesville

LIGHTING UP LEARNING!

TEACHERS: APPLY FOR A BRIGHT IDEAS GRANT!

EnergyUnited's Bright Ideas program has expanded learning opportunities for students and teachers for nearly 30 years by awarding grants to North Carolina teachers to support innovative, classroom-based projects that wouldn't typically be funded by schools. Sponsored through North Carolina's Touchstone Energy cooperatives, Bright Ideas supports teachers who believe enhanced education inspires young minds, which is part of EnergyUnited's vision for a brighter energy future for our communities

APPLICATIONS ARE OPEN

APRIL 1 – AUGUST 15 FOR
EARLY BIRD DEADLINE.

Early birds will be entered in a drawing
for a chance to receive a \$100 Visa gift card!

THE FINAL DEADLINE IS SEPTEMBER 15.



EnergyUnited.
YOUR LOCAL CONNECTION
Foundation

DID YOU KNOW...?

Beginning this month, all EnergyUnited Foundation applications will be digital and accessible on our website!

Visit [EnergyUnited.com/giving-back](https://www.energyunited.com/giving-back) to learn more.



EnergyUnited



@EnergyUnitedEMC



EnergyUnited Electric Cooperative



EnergyUnitedEMC

ENERGYUNITED.COM

1-800-522-3793